

# Model 944E-42

TELEHANDLER



## Performance

### Rated Capacity

9,000 lb (4,082 kg)

### Maximum Lift Height

42 ft (12.8 m)

### Frame Leveling

12 degrees

### Lift Speed (boom retracted, no load)

Up: 16 sec

Down: 13 sec

### Boom Speed (no load)

Extend: 13 sec

Retract: 13 sec

### Travel Speed Forward

20 mph (32 kmph) max.

### Drawbar Pull (loaded)

24,350 lb (11,045 kg) in first gear

### Operating Weight

With 50 in. Carriage and Forks

27,265 lb (12,367 kg)

### Forward Reach

35 ft 6 in. (10.8 m)

### Horizontal Load Placement Distance

80 in. (2.0 m)

## Standard Specifications

### Engine

Make and Model	Cummins QSB4.5T Turbo
Fuel	Diesel
Cycles	4
No. of Cylinders	4
Displacement	276 cu in (4.5 L)
Torque Rating	305 lb ft (414 Nm) @ 1,500 rpm
Rated Speed	2,500 rpm
Max. Gross BHP	110 hp (82 kW)
Fuel Tank	46 gal (174 L)
Engine Block Heater	
Air Intake Heater	

### Engine Filters

Two-stage centrifugal air cleaner.  
Serviceable fuel filter/water separator.  
Full-flow replaceable-element engine oil filter.

### Electrical System

Voltage	12V
Alternator	65 amp
Battery	Two batteries, each with 850 cold cranking amps at 0°F

### Transmission

Modulated powershift with integral full gear-drive dropbox.  
4-speed forward and 3-speed reverse.

### Axles

Full-time planetary 4-wheel drive.  
Limited slip front differential.  
Stabil-Trak rear axle stability system.

### Brakes

Inboard mounted internal wet disc brakes.

### Parking Brakes

Spring applied, hydraulically released parking brake with transmission declutch feature.

### Tires

Standard: 370/75-28.

### Fenders

### Cab

Certified ROPS/FOPS structure.  
Steering wheel mounted horn and back-up alarm.  
Rear view mirrors.

### Steering

4-wheel circle, 4-wheel crab, 2-wheel front.

### Instruments

Hydraulic oil temperature, fuel level, tachometer, and hourmeter gauges.

Warning indicators for transmission oil temperature, hydraulic oil temperature, engine oil pressure, alternator charging, air filter restriction, hydraulic oil filter restriction, and low brake pressure.

Indicators for parking brake and Stabil-Trak system.

### Controls

Multi-function, fully proportional pilot operated joystick controls for boom functions, carriage tilt, auxiliary control, frame leveling, and horizontal load placement system.

### Hydraulic System

Load sensing dual gear pumps.  
33.5 gal (127 L) system capacity.

### Auxiliary Hydraulics

Used for all attachments equipped with cylinders or other hydraulic components.  
Consists of valves, controls and hydraulic lines.



## Attachments

### Standard Carriage

50 in. (1.3 m) or 60 in. (1.5 m) or 72 in. (1.8 m)

### Side Tilt Carriage

50 in. (1.3 m) or 60 in. (1.5 m) or 72 in. (1.8 m)

### Swing Carriage

72 in. (1.8 m); 90 degrees

### Dual Positioning Fork Carriage

50 in. (1.3 m)

### Sheet Material Adapter

### Tower

8 ft (2.4 m), 50 in. (1.3 m) Standard Carriage

### Pallet Forks

2.36 x 4 x 48 in. (60 mm x 102 mm x 1.2 m)

2.36 x 5 x 48 in. (60 mm x 127 mm x 1.2 m)

2.00 x 6 x 72 in. (51 mm x 152 mm x 1.8 m)

### Lumber Forks

1.75 x 7 x 60 in. (44 mm x 178 mm x 1.2 m)

2.36 x 6 x 60 in. (60 mm x 152 mm x 1.5 m)

### Cubing Forks

2 x 2 x 48 in. (51 mm x 51 mm x 1.2 m)

### Material Bucket

72 in. (1.8 m), 1.0 cu yd ((0.76 m<sup>3</sup>))

96 in. (2.4 m), 1.5 cu yd (1.15 m<sup>3</sup>))

102 in. (2.6 m), 2.0 cu yd (1.53 m<sup>3</sup>))

### Grapple Bucket

96 in. (2.4 m), 1.75 cu yd (1.34 m<sup>3</sup>))

### Truss Boom

12 ft (3.7 m), 2,000 lb (907 kg) capacity

15 ft (4.6 m), 2,000 lb (907 kg) capacity

12 ft (3.7 m) with winch, 2,000 lb (907 kg) capacity

### Fork Mounted Work Platform

8 ft (2.4 m), 1,000 lb (455 kg) capacity

### Lifting Hook

## Accessories & Options

### Enclosed Cab

### Air Conditioning

### Cold Weather package

### Work Lights

### Road Lights

### Rotating Beacon

### Tire Options

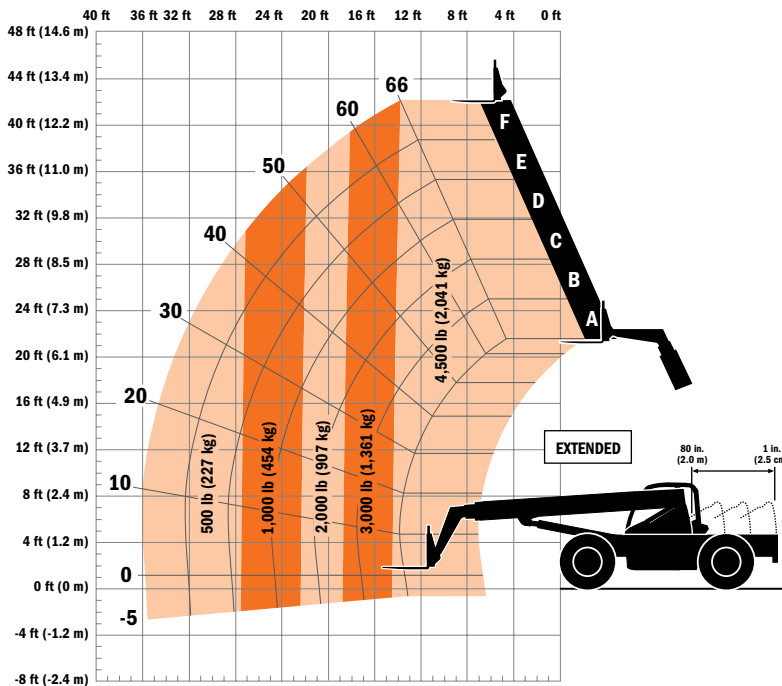
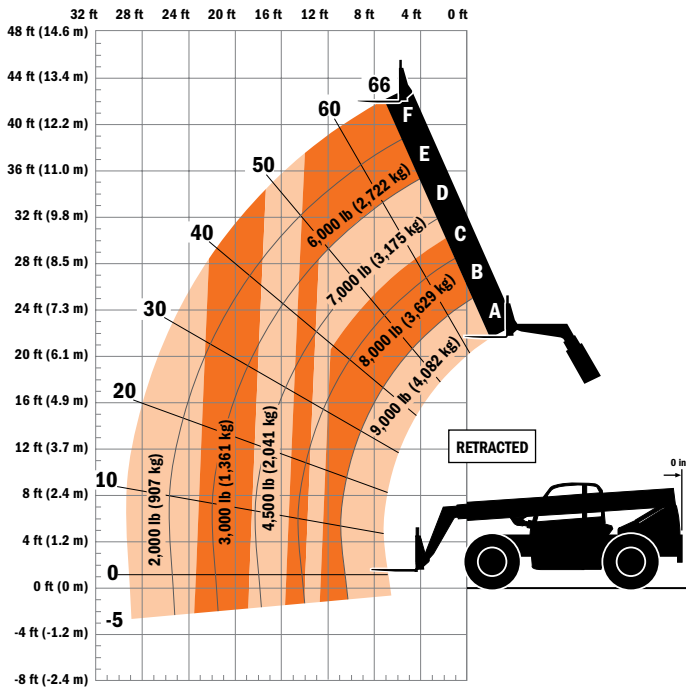
Foam-filled

Rock

Solid

# Model 944E-42

## TELEHANDLER



### Dimensions

Length (less forks)	253 in. (6.43 m)
Width	99.3 in. (2.52 m)
Height	95.5 in. (2.42 m)
Wheelbase	131 in. (3.33 m)
Ground Clearance	16 in. (406 mm)
Outside Turning Radius	147 in. (3.73 m)
Max. Reach from Front Tires to 24 in. (609 mm) Load Center	35 ft 6 in. (10.82 m)

### IMPORTANT

Rated lift capacities shown are with machine equipped with carriage and pallet forks. The machine must be level on a firm surface with undamaged, properly inflated tires. Machine specifications and stability are based on rated lift capacities at specific boom angles and boom lengths. (If specifications are critical, the proposed application should be discussed with your dealer.)

DO NOT exceed rated lift capacity loads, as unstable and dangerous machine conditions will result.

DO NOT tip the machine forward to determine the allowable load.

Use only JLG approved attachments with proper material handler model/attachment load capacity charts displayed in the operator's cab. OSHA requires all rough terrain forklift operators be trained according to OSHA 29 CFR 1910.178 (1).



Due to continuous product improvements, JLG Industries reserves the right to make specification and/or equipment changes without prior notification. This machine meets or exceeds ASME B56.6-1998 as originally manufactured for intended applications.

Form No.: SS-L944E-42-0104-15M  
Part No.: 3132501  
R051105  
Printed in USA

**JLG Industries, Inc.**  
1 JLG Drive  
McConnellsburg, PA 17233-9533  
Telephone 717-485-5161  
Toll-free in US 877-JLG-LIFT  
Fax 717-485-6417  
[www.jlg.com](http://www.jlg.com)

An Oshkosh Corporation Company