



Model 1044C-54 TELEHANDLER



Performance

Rated Capacity

10,000 lb (4,536 kg)

Maximum Lift Height

54 ft (16.5 m)

Frame Leveling

12.5 degrees

Lift Speed (boom retracted, no load)

Up: 15.6 sec

Down: 14.6 sec

Boom Speed (no load)

Extend: 15.2 sec

Retract: 11.3 sec

Travel Speed Forward

20 mph (32 kmph) max.

Drawbar Pull (loaded)

22,800 lb (10,342 kg)

Operating Weight Without Carriage and Forks

31,100 lb (14,107 kg)

Forward Reach

45 ft (13.7 m)

Horizontal Load Placement

80 in. (2.0 m)

Standard Specifications

Engine

Make and Model Cummins 4BT3.9 Turbo

Fuel Diesel

Cycles 4

No. of Cylinders 4

Displacement 239 cu in (3.9 L)

Torque Rating 278 lb ft (377 Nm)

@ 1,500 rpm

Rated Speed 2,500 rpm

Max. Gross BHP 110 hp (82 kW)

Fuel Tank 40 gal (151.4 L)

Engine Block Heater

Engine Filters

Two-stage centrifugal air cleaner.

Serviceable fuel filter/water separator.

Full-flow replaceable-element engine oil filter.

Electrical System

Voltage: 12V

Alternator: 65 amp

Battery: 1000 cold cranking amps at 0°F

Transmission

Modulated powershift with integral full gear-drive dropbox.

4-speed forward and 3-speed reverse.

Axles

Full-time planetary 4-wheel drive.

Limited slip front differential.

Service Brakes

Outboard mounted internal wet disc brakes.

Parking Brakes

Spring applied, hydraulically released parking brake with transmission declutch feature.

Tires

Standard: Hydro fill 14.00 x 24 – 12 ply

Cab

Certified ROPS/FOPS structure.

Steering wheel mounted horn.

Rear view mirrors.

Steering

4-wheel circle, 4-wheel crab, 2-wheel front.

Instruments

Hydraulic oil temperature, fuel level, tachometer, and hourmeter gauges.

Warning indicators for transmission oil temperature, hydraulic oil temperature, engine oil pressure, alternator charging, air filter restriction, hydraulic oil filter restriction, and low brake pressure.

Indicators for parking brake and RAS System.

Controls

Multi-function, fully proportional pilot operated joystick controls for boom functions, carriage tilt, auxiliary control, frame leveling, and horizontal load placement system.

Hydraulic System

Load sensing dual gear pumps.

33.5 gal (127 L) system capacity.

Front Outriggers

Axle mounted high clearance outriggers allow frame leveling without changing stance.

Auxiliary Hydraulics

Used for all attachments equipped with cylinders or other hydraulic components. Consists of valves, controls and hydraulic lines.

Accessories & Options

John Deere Engine

115 hp (86 kW) or 125 hp (93 kW)

Enclosed All Weather Cab

Basic Work Lights

Complete Road Lights

Rotating Beacon

Strobe Light

Suspension Seat

Second Auxiliary Hydraulic Line

Attachments

Standard Carriage

50 in. (1.3 m) or 74 in. (1.9 m)

± 10° Side Tilt Carriage

50 in. (1.3 m) or 74 in. (1.9 m)

± 45° Swing Carriage

72 in. (1.8 m)

Pallet Forks

2 x 5 x 48 in.
(51 mm x 127 mm x 1.2 m)

Lumber Forks

1.75 x 7 x 60 in.
(45 mm x 178 mm x 1.5 m)

Block Forks

2 x 2 x 48 in.
(51 mm x 51 mm x 1.2 m)

Truss Boom With or Without Winch

10 ft (3.0 m)

8 ft (2.4 m) Tower With 50 in. (1.3 m) Tilt Carriage

Light Material Bucket

1.25 cu yd (0.95 m³) capacity
96 in. (2.4 m) wide

Concrete Bucket

Sweeper

Hydraulic driven

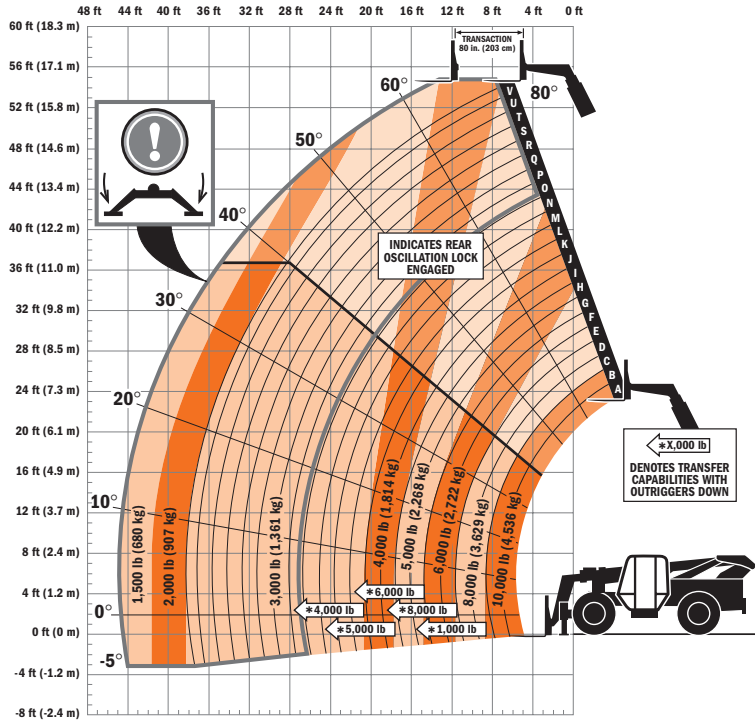
Hydraulic Fork Position Carriage

50 in. (1.3 m)
Single and dual fork options

Earth Auger



Model 1044C-54 TELEHANDLER



Dimensions

- Length (less forks) 246 in. (6.24 m)
- Width 100 in. (2.54 m)
- Height 95 in. (2.41 m)
- Wheelbase 124 in. (3.14 m)
- Ground Clearance 16 in. (406 mm)
- Outside Turning Radius . . 164 in. (4.16 m)
- Maximum Reach from Front Tires to
24 in. (609 mm) Load Center 45 ft
(13.7 m)

IMPORTANT

Rated lift capacities shown are with machine equipped with carriage and pallet forks. The machine must be level on a firm surface with undamaged, properly inflated tires. Machine specifications and stability are based on rated lift capacities at specific boom angles and boom lengths. (If specifications are critical, the proposed application should be discussed with your dealer.)

DO NOT exceed rated lift capacity loads, as unstable and dangerous machine conditions will result.

DO NOT tip the machine forward to determine the allowable load.

Use only JLG approved attachments with proper material handler model/attachment load capacity charts displayed in the operator's cab. OSHA requires all rough terrain forklift operators be trained according to OSHA 29 CFR 1910.178 (1).



JLG Industries, Inc.
 1 JLG Drive
 McConnellsburg, PA 17233-9533
 Telephone 717-485-5161
 Toll-free in US 877-JLG-LIFT
 Fax 717-485-6417
 www.jlg.com

Due to continuous product improvements, JLG Industries reserves the right to make specification and/or equipment changes without prior notification. This machine meets or exceeds ASME B56.6-2002 as originally manufactured for intended applications.

Form No.: SS-L1044C-54-0204-15M
 Part No.: 3132502
 Printed in USA